

# BLUES 2006



## .NET IBM 3270, 5250, and DEC VT100 Emulation for the Microsoft Windows-Desktop !

**B**lues 2006, Microsoft Windows® .NET 2.0 applications for 3270, 5250, and VT100 terminal and printer emulation.

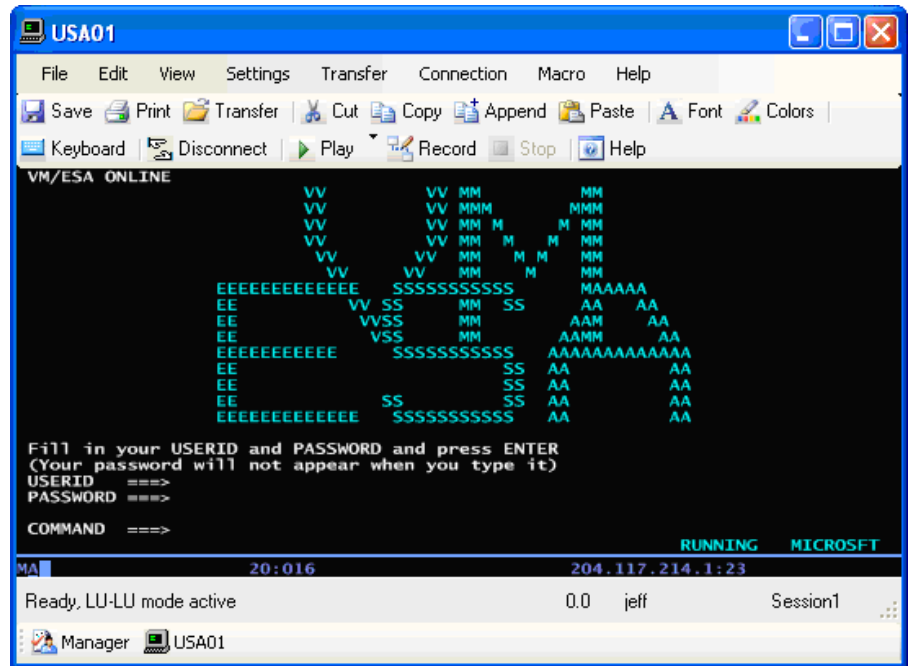
Now you can combine the advantages of the **Microsoft® NET architecture** with your mainframe and midrange connectivity software.

Choose from **ClickOnce deployment** or classic installation. ClickOnce deployment is a breeze, deploy directly from Internet Explorer and have the Explorer cache the newest version on each PC. Version control and updates are maintained by Internet Explorer. Update existing web server with a newer version and it is automatically subsequently launched.

**Isolated storage** usage for each users settings let each users' preferences follow them around the local area network. The file system is protected from malicious behavior and inexperienced users by being able to limit the size and location where the isolated storage resides.

The **Windows® Registry** is not used at all, no more registry problems. The .NET Framework eliminates any dependency on the registry, which makes installation, removal, and replication much easier.

**Thin client** provides small footprint and quick download deployment. No more **DLL Hell**, by isolating application assemblies, applications always load the components with which they were built and tested. Dll's are accessed by only one application; they are not shared by multiple applications on the same computer. Therefore, Blues can't be



affected by changes made to the system by other applications and there is no chance of disrupting existing applications.

Operating System **integrity and reliability** are not compromised. Each Blues application runs in a totally independent. NET address space that ensures operating system stability. Unparalleled security and virus invulnerability. Each file is protected through digital signatures, versioning, and the .NET architecture to insure safe virus free operation. The comprehensive nature of the .NET Framework security architecture makes .NET applications both reliable and trustworthy.

Fully featured **display and printer emulation** in conjunction with a sophisticated **Blues Manager application**. The Blues Manager maintains a single network database of all information required to

configure and maintain Blues for the whole network. The Blues Manager allows for centralized customization of your emulation. In addition, the Blues Manager can restrict emulation capabilities on a per session basis by allowing customization of each menu item.

Can connect over **SSL or TLS** secure sockets protocols by using the standard Microsoft encryption/decryption built into the .NET 2.0 framework. .NET 2.0 managed software automatically switches from 32 bit to 64 bit application when you need it.

**UNICODE** applications with 40 different IBM host code pages supported.

Complete integration with **Microsoft Internet Information Server** provides a centrally configured, easily deployed (over Microsoft ClickOnce technology) robust emulator.



**Basic functions**

- General
  - Managed .net 2.0 application
  - TN3270 or TN3270E
  - TN5250 or TN5250E
  - Telnet and SSH VT100
  - Microsoft MDI or SDI Interface
  - Runs as native 32/64 bit application
- Terminal Emulation
  - Terminal LU types 2, 3, 4 and 5
  - Modell 2-5 Bind switchable
  - Extended 3270/5250 datastream
  - 7 color mode
  - Extended highlighting
  - Cursor configuration
    - underline
    - Block
    - blinking
    - ruling line
  - Type Ahead
- 3287 and 3812 printer emulation
  - LU type 1 (SCS)
  - LU type 3 (3270 DS)
  - Print to disk
  - Windows print spooler
  - Print direct to LPTx
  - True Type font selection
  - Margins & underline support
  - Kerning (characters & lines)
  - HEX-Passthrough
  - SCS transparent print
- File Transfer
  - IND\$FILE
    - CICS, VM/CMS, TSO
    - Buffered & structured field
  - FTP (plain and SSL)
  - Transfer manager
    - Portfolio, Scheme, History editor
    - Batch file transfer
- API
  - .Net Windows forms control
  - .Net methods, properties and events
  - .Net interface for VB, C# and J#
  - Sample MS Visual Studio projects
- Help System
  - Complete user manual in help system
  - Graphical point and click help
  - Search for any heading in the manual
  - Adobe PDF user manual

**Terminal functions**

- Clipboard Options
  - Cut, copy, paste, append
  - Add CR/LF to each line
  - Replace spaces with tabs
  - Remove leading spaces

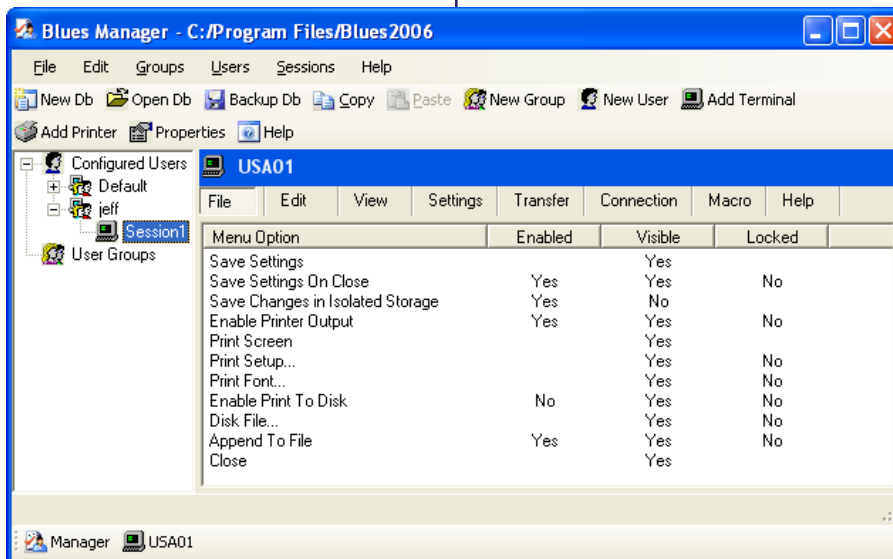
Remove trailing spaces  
 Include OIA during copy  
 Paste clipboard lines in columns

- Colors
  - Foreground colors
  - Background colors configurable
  - OIA colors
- Fonts
  - True Type font selection
  - Auto sizes to match any window size
- Macro Recorder
  - Record, play
  - Edit,delete
  - Macro status in statusline
  - Automatic play macro after connecting
  - Map macro to mouse button
  - Map macro to keyboard
  - Map macro to button bar
  - Send / receive script support
- Function bars
  - 2 Buttonbars, horizontal or vertical
  - Toolbar
  - Statusbar
- Hot Spots
  - Find 3270/5250 keys on screen
  - Macro recognition
  - Hot Spot frame

- Mouse button configuration
  - 3270 functions
  - Play macros
- SSL and TLS secure IP support

**Administrator functions**

- Blues Manager
  - Central Configuration database
  - Deploy configurations from web server
  - Import Windows domain users
  - Database for all users / sessions
  - Automatic user profile generation
  - Email if not allowed access
  - Backup, Restore database to ZIP file
  - Password protection
  - User menu configuration
  - Hide menubar
  - Hide titlebar
  - Initial window size
    - normal
    - hide
    - minimized
    - maximized
    - previous size and location
- Hot Backup
  - All connection types
  - Different destinations



- Hot Spot help text
  - Hot Spot url recognition
- Options
  - Enable sound
  - Notify when minimized
  - Numeric lock
- Print screen
  - Print screen to printer
  - Print screen to disk
  - Append to file
- Keyboard mapping
  - Dynamic keyboard configuration
  - Standard keyboard support
    - standard pc, at
    - enhanced 101/102
    - 122 - keyboard

- Installation
  - Standalone installation
  - ClickOnce web deployment
  - ClickOnce file share deployment

**System requirements**

- .NET Framework 2.0
- Web Deployment - IIS 6.0, IIS 7.0

**Supported operating systems**

- Windows® 98
- Windows® Millennium Edition
- Windows® 2000 Pro SP. 3
- Windows® XP Pro SP. 2
- Windows® Vista 32 or 64 bit
- Windows® Server 2003
- Windows® Server 2003 Terminal Server

