

BLUES 2000



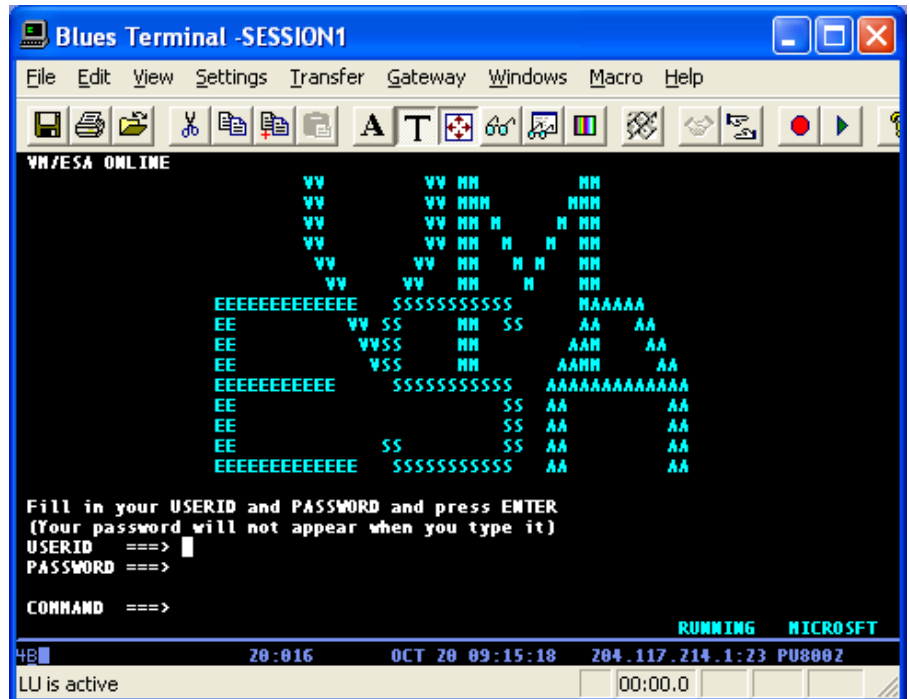
IBM and DEC Terminal And Printer Emulation For The Windows Desktop !

Blues 2000, from Newhart Systems, Inc. is the product for your entry into the 3270, 5250 or DEC world.

Fully featured display and printer emulation in conjunction with a sophisticated BLUES Manager application.

Connectivity from PC's to all major vendor gateway's. The Blues Manager maintains a single network database of all information required to configure and maintain Blues for the whole LAN. The Blues Manager allows for centralized customization of a WAN\LAN. In addition, the Blues Manager may restrict emulation capabilities on a per session basis by allowing customization of each menu item. The Blues Manager can automatically configure hundreds of PC's with a single click of the mouse. Each display session and each printer session may be protected by password security. Truly the Blues administrative functions set the Blues 2000 apart from the rest of the pack.

Advanced Terminal Emulation - Windows Applications For 3270, VT, and 5250 Display Emulation. Models 2-5 BIND switchable Display emulation, up to 16 sessions per PC, full 3270/5250 extended data stream support with 7 color mode, extended highlighting including blinking text. Block, underline, and ruling line cursor support, color tool bar.



IBM 3287 Printer Emulation - LUType 1 and 3 data stream support. Simulated 3287 printer control panel with 3270 operator information area.

IBM 3174 Emulation - Windows Applications let you emulate an IBM 3174 controller for directly connecting to your host through IBM 802.2 DLC or X.25 QLLC. Netview Support.

Graphical Administrator - Displays all Blues users and their current configurations. Tool bar makes most used options simple and fast. Import Netware For SAA Users, Import Microsoft NT SNA Server Users, Copy existing user's configurations to new users. Modify each sessions connection options, file transfer

options, keyboard options, color mappings, API options, size and position of window upon start, printer settings, menu item privileges, and more.

ActiveX Control - If you need to automate or screen scrape, the included ActiveX control has over 100 properties and methods that provide the most sophisticated programmer with the tools they need. Embed the ActiveX control in your VB, C++, HTML or ASP applications and you instantly have an emulator in your application. The sample Microsoft 6.0 VB project contains a functioning terminal emulator that can be value added by your programming staff.



Basic functions

- General
 - Node type 2.0
 - max. 16 Terminal or Printer Sessions
 - Microsoft SDI Interface
- Connection types
 - PU 2.0, 802.2 DLC, X.25 QLLC
 - MS Host Integration Server
 - Netware for SAA
 - IBM Comm Server
 - TN3270 or TN3270E
 - TN5250 or TN5250E
- Terminal Emulation
 - Terminal LU type 2
 - Modell 2-5 Bind switchable
 - Extended 3270/5250 datastream
 - 7 color mode
 - Extended highlighting
 - Cursor configuration
 - underline
 - Block
 - blinking
 - ruling line
 - Type Ahead
- 3287 and 3812 printer emulation
 - LU type 1 (SCS)
 - LU type 3 (3270 DS)
 - Print to disk
 - Windows print spooler
 - Print direct to LPTx
 - True Type font selection
 - Margins & underline support
 - Kerning (characters & lines)
 - HEX-Passthrough
 - SCS transparent print
- File Transfer
 - IND\$FILE
 - CICS, VM/CMS, TSO
 - Buffered & structured field
 - FTP over TCP/IP
 - Transfer manager
 - Portfolio, Scheme, History editor
 - Schedule portfolio transfers
 - Batch file transfer
- API
 - EHLAPI IBM compatible.
 - WinHLLAPI Wosa compatible
 - HLLAPI from MS-DOS box
 - DDE hot and warm Links
 - ActiveX control
- Help System
 - Complete user manual in help system
 - Graphical point and click help
 - Search for any heading in the manual

Terminal functions

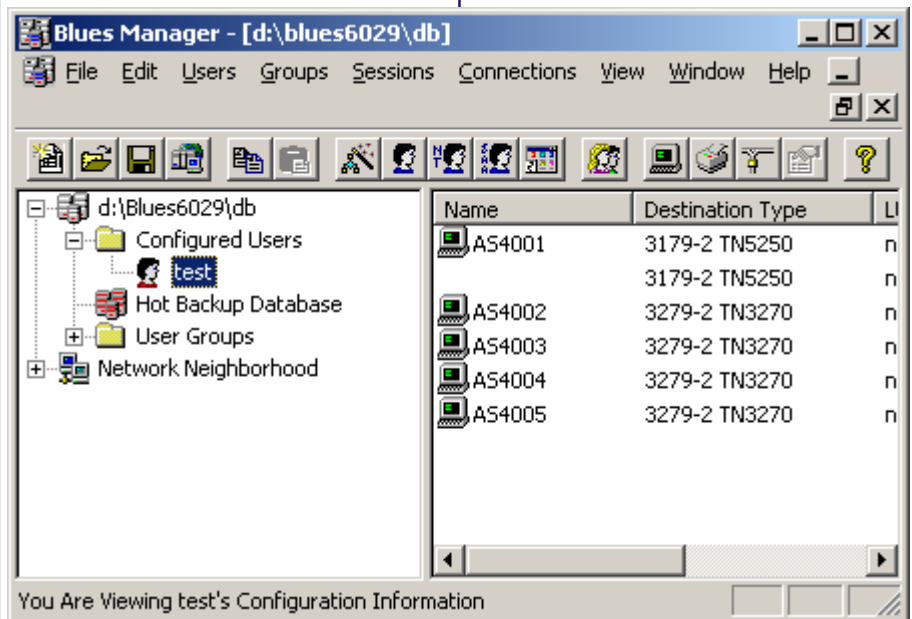
- Clipboard Options
 - Cut, copy, paste
 - Add CR/LF to each line
 - Replace spaces with tabs
 - Remove leading spaces
 - Remove trailing spaces
 - Include OIA during copy
 - Paste clipboard lines in columns
- Colors
 - Foreground colors
 - Background colors konfigurierbar
 - OIA colors
- Fonts
 - True Type font selection
 - 100 new screen fonts
 - Auto sizes to match any window size
- Macro Recorder
 - Record, play
 - Edit, delete
 - Macro status in statusline
 - Automatic play macro after connecting
 - Map macro to mouse button
 - Map macro to keyboard
 - Map macro to button bar
 - Send / receive script support

Print screen to disk
Append to file

- Keyboard mapping
 - Dynamic keyboard configuration
 - Standard keyboard support
- Mouse button configuration
 - 3270 functions
 - Play macros

Administrator functions

- Blues Manager
 - Central Configuration database
 - Deploy configurations from web server
 - Import Windows domain users
 - Database for all users / sessions
 - Automatic user profile generation
 - Email if not allowed access
 - Backup, Restore database to ZIP file
 - Passwortprotection
 - User menu configuration
 - Hide menubar
 - Hide titlebar
 - Initial window size
 - normal
 - hide
 - minimized
 - maximized



- Function bars
 - 2 Buttonbars, horizontal or vertical
 - Toolbar
 - Statusbar
- Hot Spots
 - Find 3270/5250 keys on screen
 - Macro recognition
 - Hot Spot frame
 - Hot Spot buttons on PS option
- Options
 - Enable sound
 - Notify when minimized
 - Numeric lock
- Print screen
 - Print screen to printer

— previous size and location

- Hot Backup
 - Hot Backup Database
 - All connection types
 - Different destinations
- Installation
 - Standalone installation
 - File share installation

Supported operating systems

- Windows® 95
- Windows® 98
- Windows® Millennium Edition
- Windows® NT 4.0
- Windows® 2000 Pro
- Windows® XP Pro, Home



© 2003 Newhart Systems Inc.
121 Vanderkemp Ave.
Barneveld, NY 13304
Tel. 315 – 896 4131

www.newhartsystems.com