

# BLUES Virtual Host



## The easiest to use .NET IBM Terminal Emulation Toolkit !

**B**lues Virtual Host, this simple to use **.NET 2.0 component** is used to connect to IBM mainframe and IBM midrange computers and programmatically send and receive screens of host information. The host computer is not aware that it is communicating with an application; it treats the application as if it were a typical IBM terminal being used by an operator. This means that no host programming is required and assures data integrity.

This product is based on over 20 years of emulation software development with proven integrity and functionality.

Simply add a reference to our **.net class**, set a few properties, call the BeginConnect method and your up and running. Your application is notified of screen changes via an event handler so no excess CPU time is ever wasted.

The product includes our **VirtualHost .net dll**, documentation in Windows help format, and sample Microsoft Visual Studio projects for both Windows Forms applications and ASP.NET applications. The sample projects are written in both the C# and VB languages.

Can connect over **SSL or TLS secure sockets protocols** by using the standard Microsoft encryption/decryption built into the .NET 2.0 framework. .NET 2.0 managed software automatically switches from 32 bit to 64 bit application when you need it.

**UNICODE component** with 40 different IBM host code pages supported.

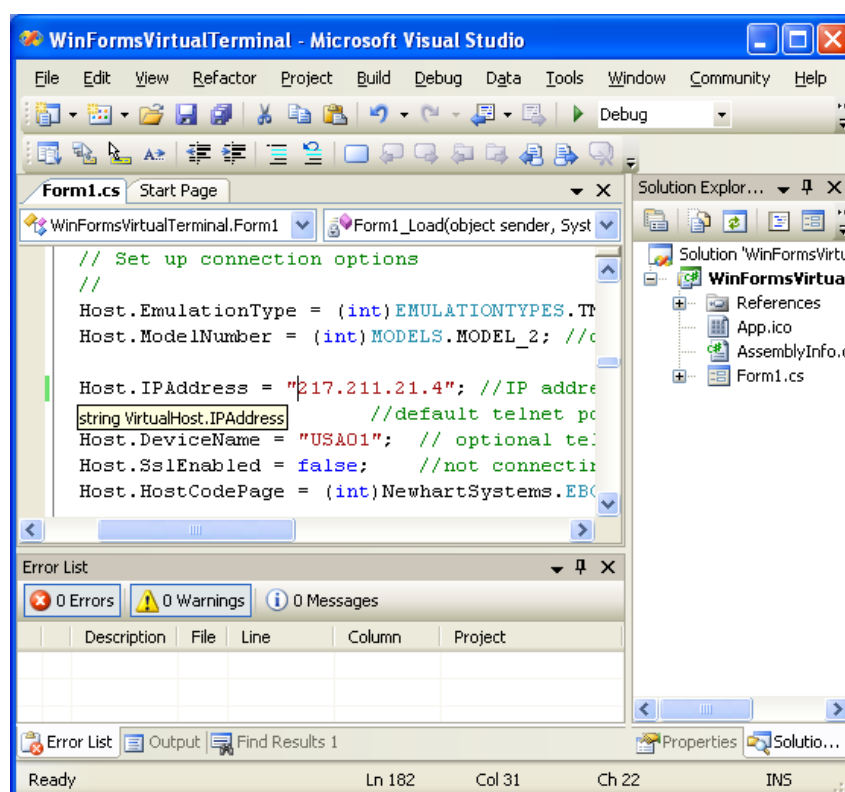
**Visual Studio 2005 Integration** - fully integrated with Microsoft Visual Studio 2005

### Programming Languages

Any Microsoft .NET 2.0 programming language, including C#, J#, and Cobol.net.

### Datastream Support

Full 3270/5250 extended data stream support with 7-color mode and extended highlighting.



### Terminal Emulation

Telnet TN3270 and TN5250 Display Emulation.

- IBM 3278/3279 Model 2 (24 rows by 80 columns)
- IBM 3278/3279 Model 3 (32 rows by 80 columns)
- IBM 3278/3279 Model 4 (43 rows by 80 columns)
- IBM 3278/3279 Model 5 (27 rows by 132 columns)
- IBM 5250 Model 2 (24 rows by 80 columns)
- IBM 5250 Model 5 (27 rows by 132 columns)
- Dynamic (host controlled) IBM 3278/3279 Models 2 - 5
- Dynamic (host controlled) IBM 5250 Models 2 and 5

### Connection Types

TN3270 or TN3270E  
TN5250 or TN5250E  
SSL and TLS secure sockets

### System requirements

- .NET Framework 2.0

### .NET supported operating systems

- Windows® 98
- Windows® ME
- Windows® 2000 Pro SP. 3
- Windows® XP Pro SP. 2
- Windows® Server 2003
- Windows® Server 2003 Terminal Server

